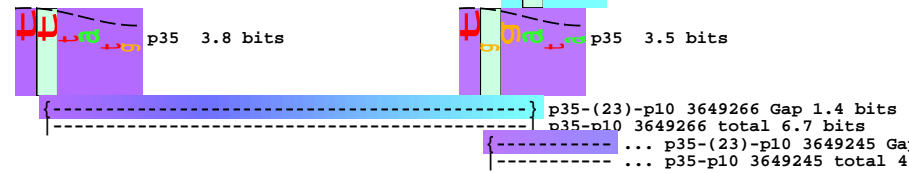
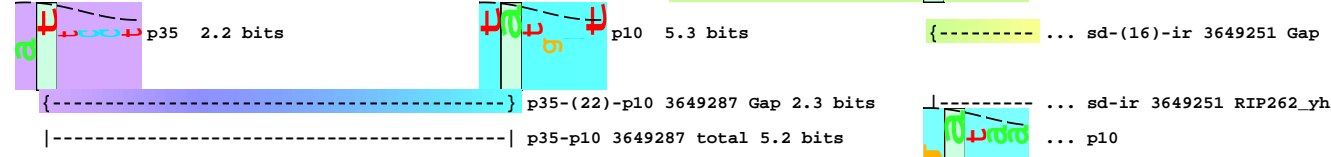


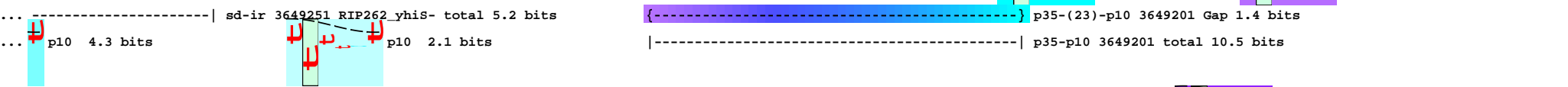
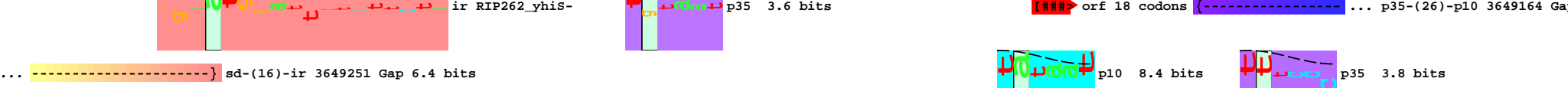
piece 1, NC_000913, RIP262_yhis-, config: linear, direction: -, begin: 3649343, end: 3648815

5' ^{*3649340 *} t a t t a t a c c t g g g t a a a g t c a a t t g a c a t a a a a t t c c t t a t t c a t c a t t t g t t t t a t g c t a a g a t g t t t a a a t t g g a t a a 3'
- tyr - tyr - thr - trp - gly - lys - val - asn - ● -
- ile - ile - pro - gly - val - lys - ser - ile - asp - ile - lys - phe - leu - ile - his - his - leu - phe - tyr - ala - lys - met - phe - lys - leu - asp - asn -
- leu - tyr - leu - gly - ● - -fMet - thr - ● - -fMet - leu - arg - cys - leu - asn - trp - ile - ile -

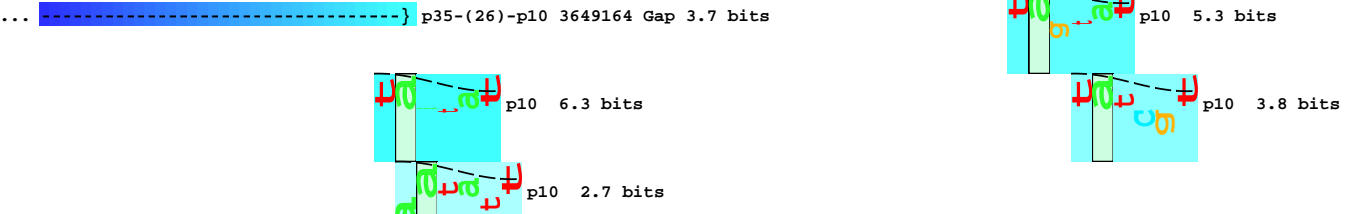
NC_000913.yhis

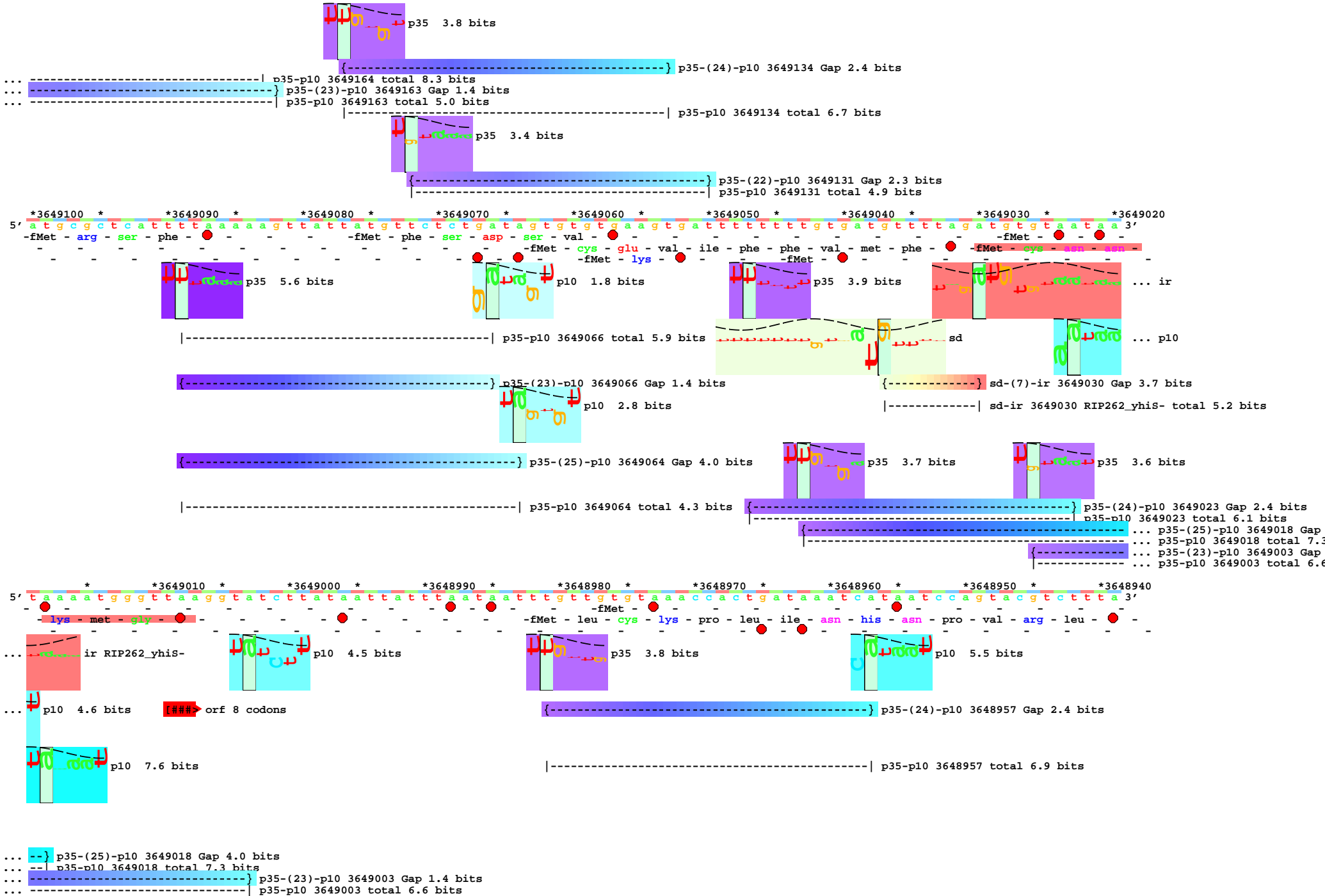


5' ^{*3649260 *} t t a g a a c a g g a a t g g a t t t t c t t c t a c a c a c a a t a a a t g t a a t g c g t t a t a t c t t c c t t g a t a t a a t t a c c t t t g a t t t c c c 3'
- arg - thr - gly - met - asp - phe - leu - leu - his - thr - ile - asp - val - met - arg - tyr - ile - phe - leu - ile -
- - - -fMet - ile - ser - leu -



5' ^{*3649180 *} t t t t a t c t c c a c c c g g t a a t a t t t g t g t g t a a a a a g g g t a g t a g t a t c g t a a g g a a a t c g t t a a c a a c t a t c a a a 3'
-fMet - cys - lys - lys - arg - val - val - ile - val - ser - ● -
- leu - ser - pro - pro - gly - asn - ile - cys - val - ● -





* * * * *
5' a a c t a c t g c g c t g t a t c g c t g a t a a c t a a g c a g c t c a c t g a t a c a c c a t g c t g g a c g c g a t a a t t g g a a t c t c a c g c a g g g 3'
-fMet - glu - ser - his - ala - gly -
-fMet - leu - asp - ala - ile - ile - gly - ile - ser - arg - arg - glu -



... sd
... sd-(7)-ir 3648851 Gap
... sd-ir 3648851 RIP262_yhis

* * * * *
5' a g t a c t g t g t a a a t a g c a a a a t c g c c t g a t g c g c t a c g c c t g t 3'
- ser - thr - val -
- tyr - cys - val - asn - ser - lys - ile - ala - -fMet - arg - tyr - ala - cys -

sd [###> orf 2 codons

sd-(7)-ir 3648851 Gap 3.7 bits
sd-ir 3648851 RIP262_yhis- total 8.3 bits

