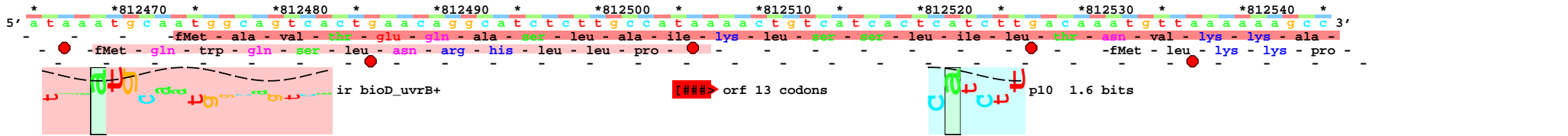
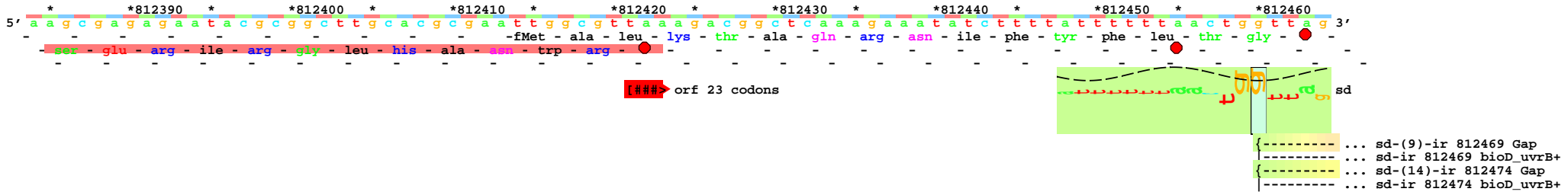
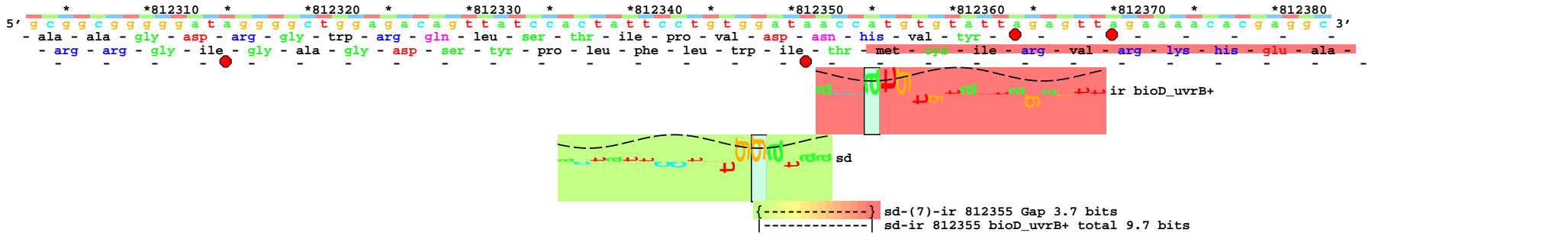
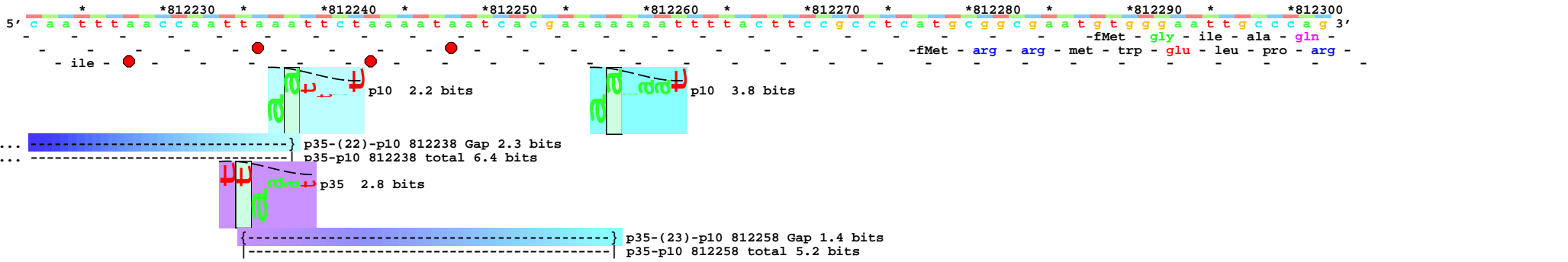
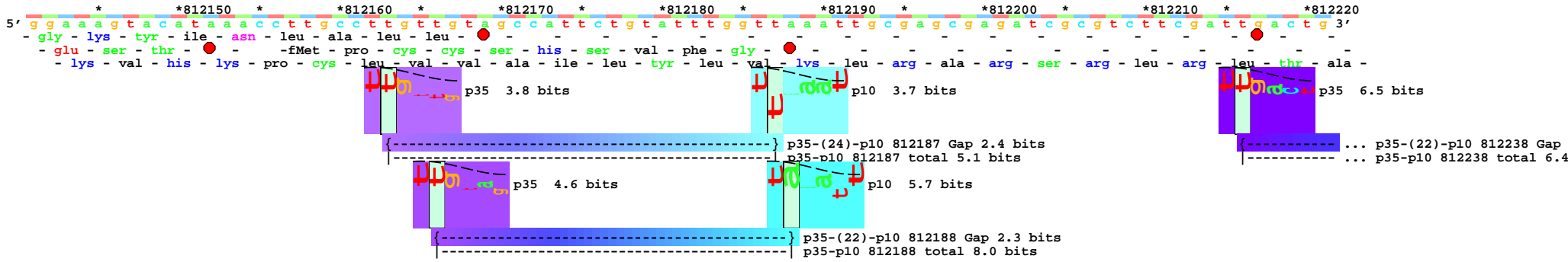
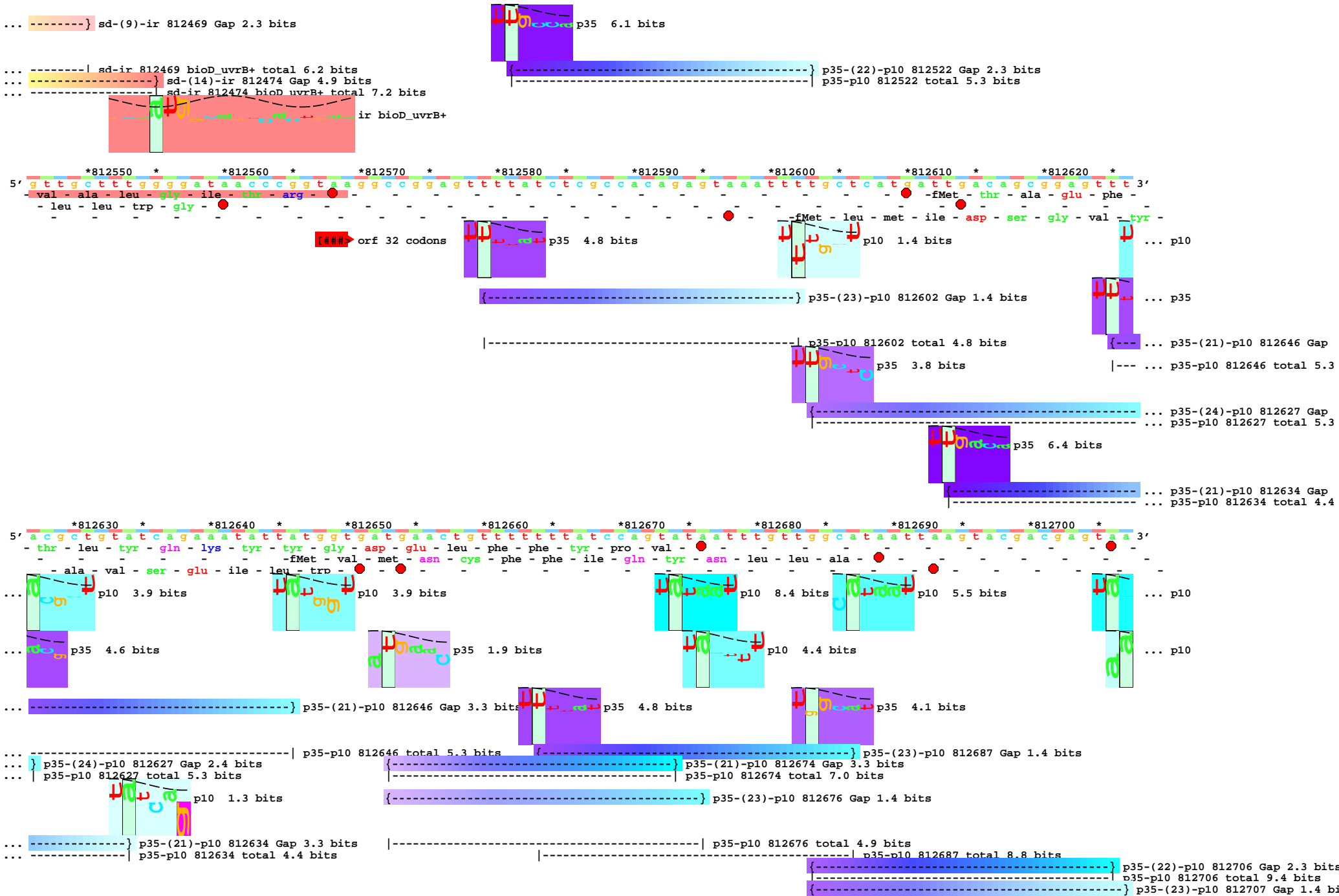


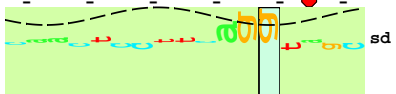
piece 1, NC\_000913, bioD\_uvrB+, config: linear, direction: +, begin: 812141, end: 812768





\*812710 \* \*812720 \* \*812730 \* \*812740 \* \*812750 \* \*812760 \*  
5' a a t t a c a t a c c t g c c c g c c c a a c t c c t t c a g g t a g c g a c t c a t g a g t a a a c c g t t c a a a c t 3'

... p10 7.6 bits



-fMet - ser - lys - pro - phe - lys -

[----- ... NC\_000913.uvrB

... p10 1.9 bits



ir bioD\_uvrB+

{-----} sd-(10)-ir 812749 Gap 2.7 bits  
|-----| sd-ir 812749 bioD\_uvrB+ total 9.2 bits