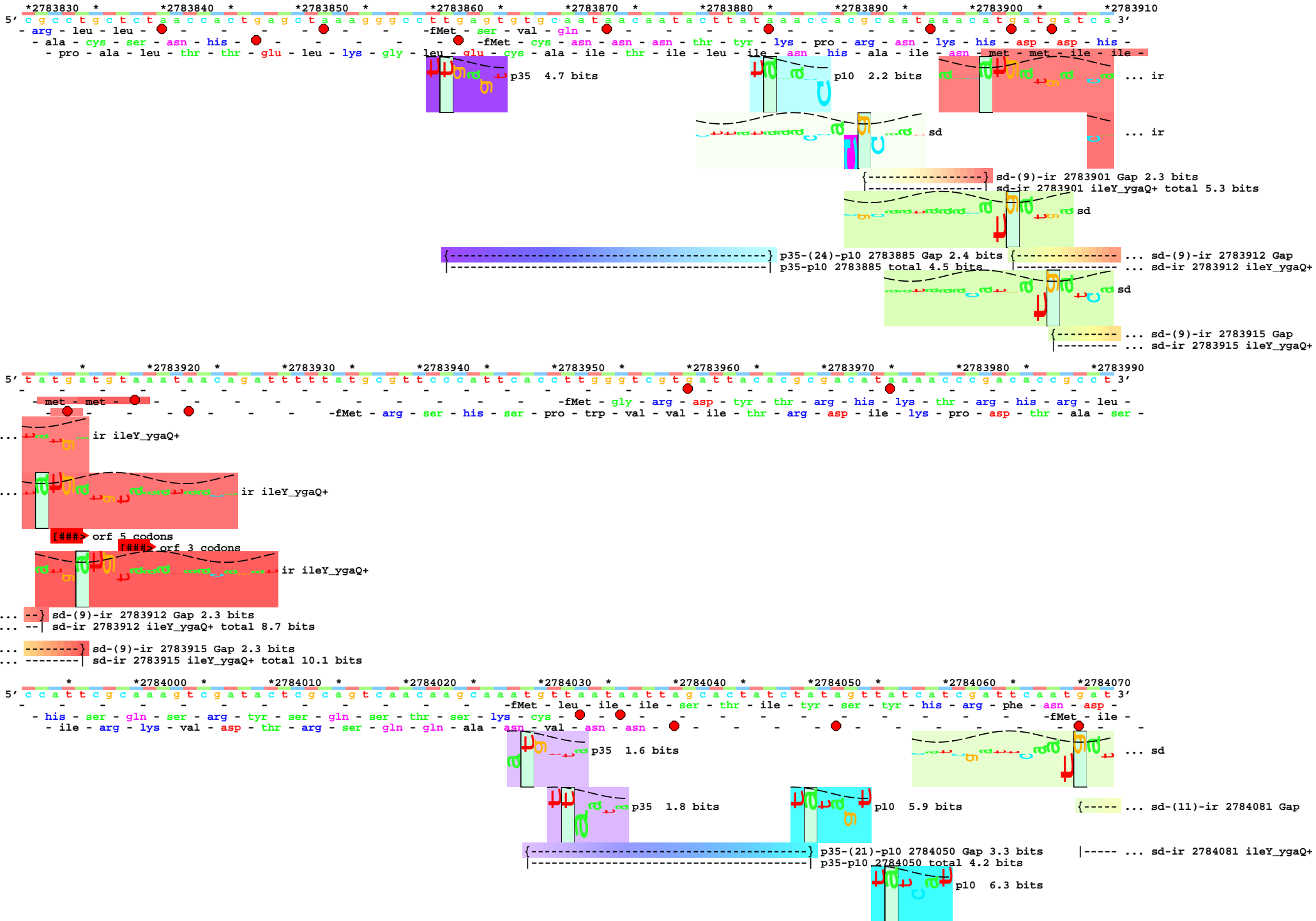
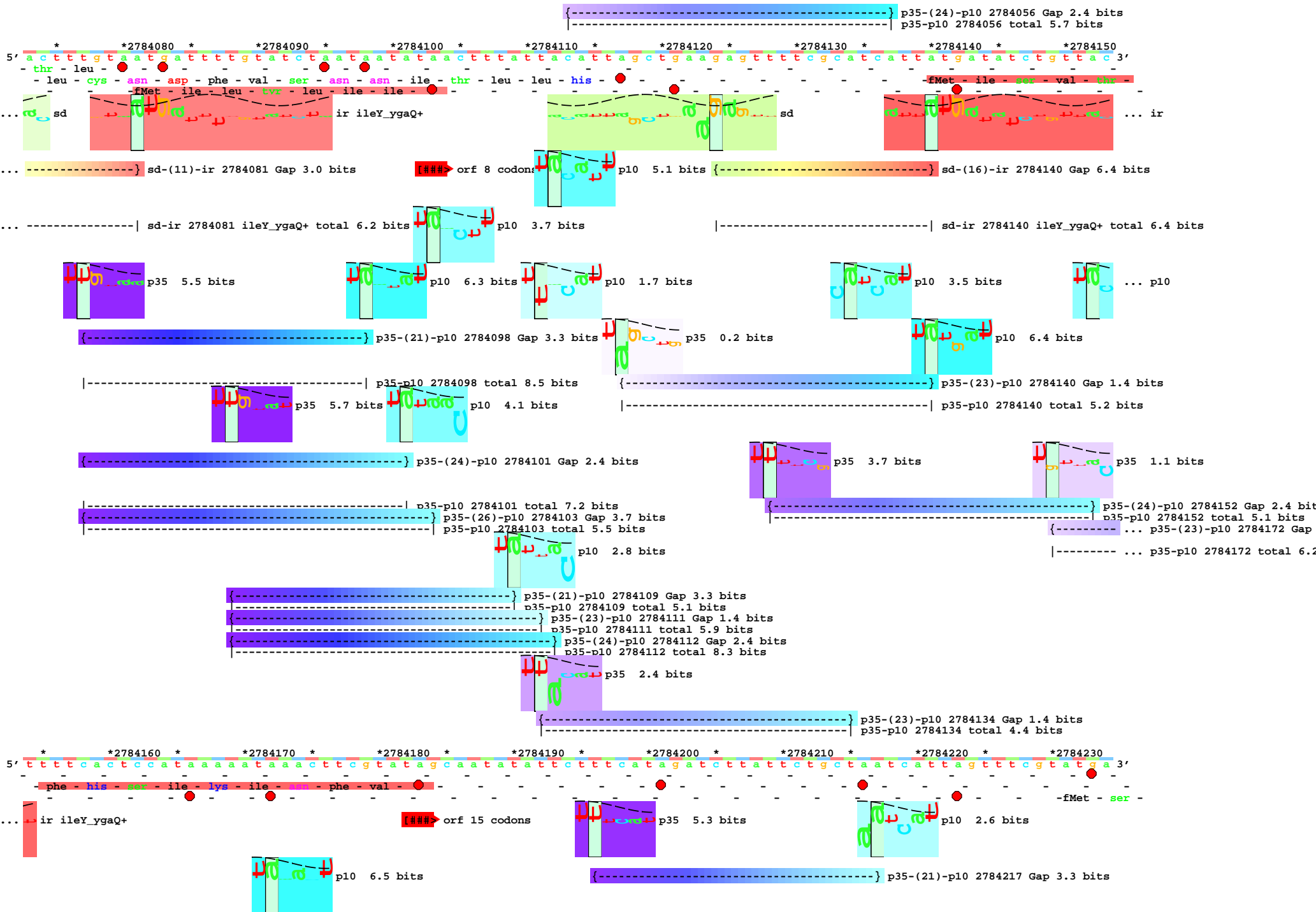


piece 1, NC_000913, ileY_ygaQ+, config: linear, direction: +, begin: 2783830, end: 2784438



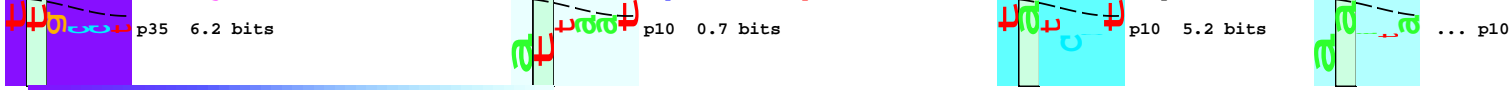


... p10 3.8 bits

-----| p35-p10 2784217 total 4.6 bits

... p35-(23)-p10 2784172 Gap 1.4 bits
-----| p35-p10 2784172 total 6.2 bits

*2784240 *2784250 *2784260 *2784270 *2784280 *2784290 *2784300 *2784310 *
5' g c g a t t t t g a c a g t t g c c t c t c c a g a c c a c a t c g a t a a t t a a a a c a g a t t t a a g c a t t a t c c t t t t c c a t a t a a a t a 3'
-fMet - thr - val - ala - ser - pro - asp - his - ile - asp - asn - ile - asn - lys - thr - asp - leu - ser - ile - ile - leu - phe - his - ile - asn - ile -



-----| p35-(24)-p10 2784274 Gap 2.4 bits
-----| p35-p10 2784274 total 4.4 bits



-----| p35-(23)-p10 2784297 Gap 1.4 bits
-----| p35-p10 2784297 total 6.4 bits

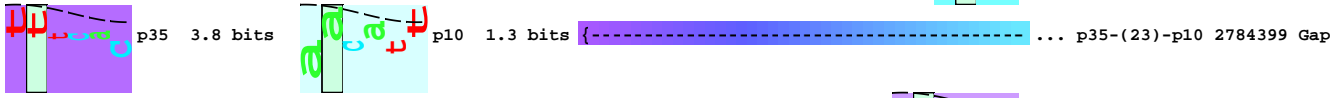
-----| p35-(24)-p10 2784312 Gap 2.4 bits
-----| p35-p10 2784312 total 4.8 bits

*2784320 *2784330 *2784340 *2784350 *2784360 *2784370 *2784380 *2784390 *
5' t t g g a t a a a a g t a g g a c a t c t g t t g c a a t t a c t t t c a c a a c a a t t a a a c a t t t t a t g t t t c c g t a t a c a t c a t a t t a c t 3'
-fMet - asp - lys - ser - arg - thr - ser - val - cys - asn - tyr - phe - his - asn - asn - ile - phe - met - phe - pro - tyr - thr - ser - tyr - tyr - ser -



-----| p35-(23)-p10 2784363 Gap 1.4 bits

-----| p35-p10 2784363 total 6.4 bits

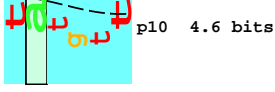


-----| p35-(24)-p10 2784364 Gap 2.4 bits

-----| p35-p10 2784364 total 4.9 bits

-----| p35-(24)-p10 2784416 Gap

-----| p35-(26)-p10 2784366 Gap 3.7 bits
-----| p35-p10 2784366 total 4.7 bits



p35-(22)-p10 2784372 Gap 2.3 bits
p35-p10 2784372 total 6.0 bits

p35 3.8 bits

p35-(21)-p10 2784389 Gap 3.3 bits
p35-p10 2784389 total 4.1 bits

p35 4.8 bits

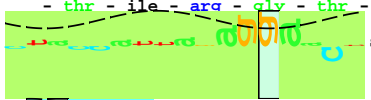
p35-(22)-p10 2784391 Gap 2.3 bits
p35-p10 2784391 total 5.2 bits

p35 3.8 bits

p35-(24)-p10 2784394 Gap 2.4 bits
p35-p10 2784394 total 5.9 bits
... p35-p10 2784399 total 7.7

5' *2784400 * *2784410 * *2784420 * *2784430 *
c t a c c a t t a g a g g a a c t t t a t t a t g t t t t c t a t a a a a c c a g g 3'

thr ile arg gly thr leu leu cys phe leu fMet phe ser ile lys pro



sd [-----] ... NC_000913.ygaQ



ir ileY_ygaQ+

p10 4.9 bits

... p10 4.5 bits {-----} sd-(10)-ir 2784419 Gap 2.7 bits

... p35-(23)-p10 2784399 Gap 1.4 bits

sd-ir 2784419 ileY_ygaQ+ total 12.4 bits

p35-(24)-p10 2784416 Gap 2.4 bits

p35-p10 2784416 total 7.2 bits

p10 7.1 bits

... ----| p35-p10 2784399 total 7.7 bits