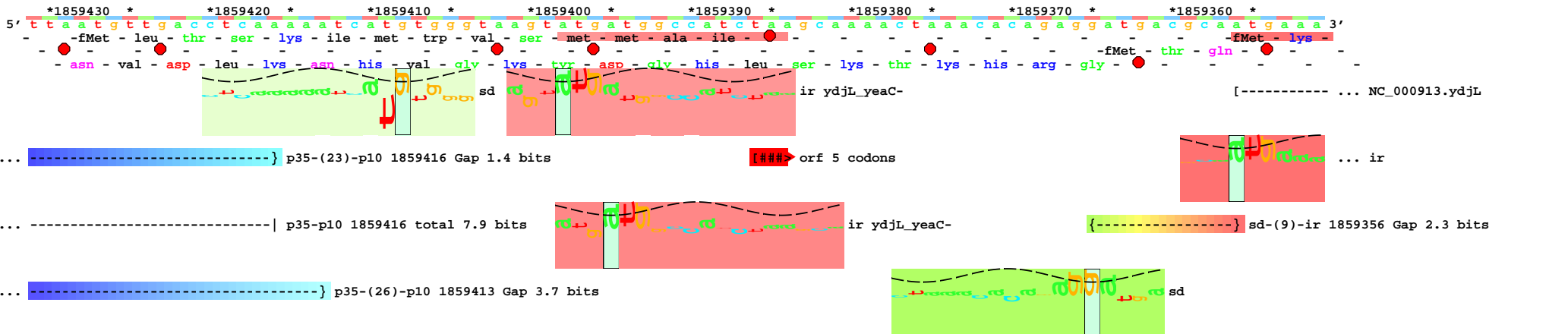
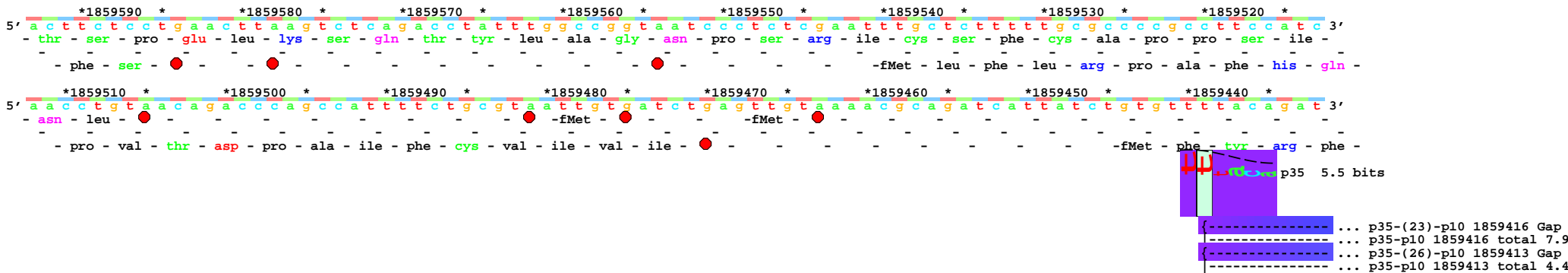
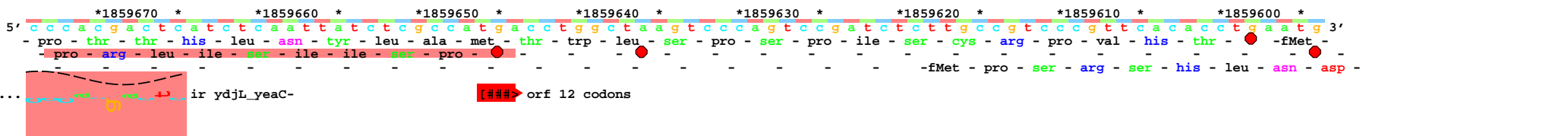
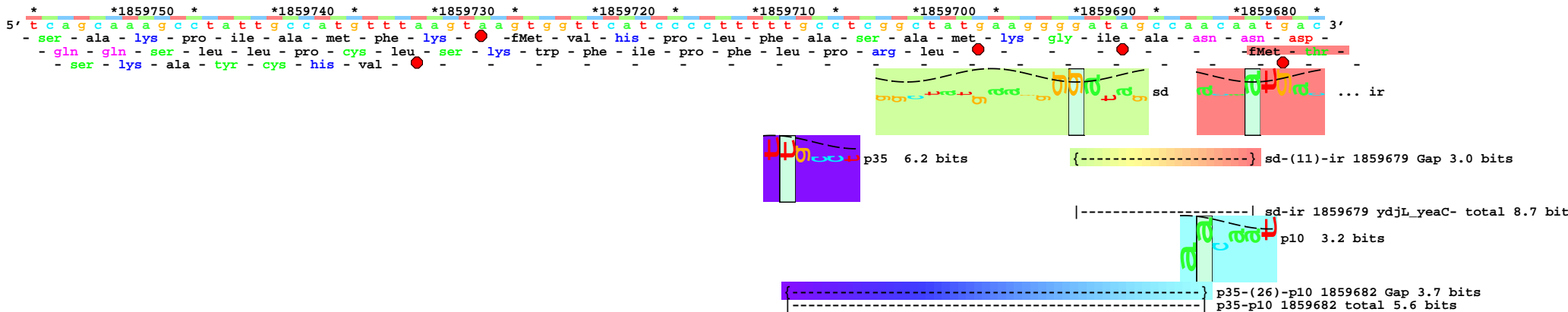


piece 1, NC\_000913, ydjL\_yeaC-, config: linear, direction: -, begin: 1859755, end: 1859337



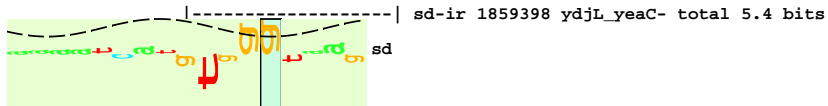
...-----| p35-p10 1859413 total 4.4 bits

|-----| sd-ir 1859356 ydjL\_yeaC- total 13.3 bits



p35 5.0 bits

{-----} sd-(10)-ir 1859398 Gap 2.7 bits

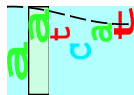


|-----| sd-ir 1859398 ydjL\_yeaC- total 5.4 bits

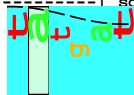


p10 3.8 bits

{-----} sd-(9)-ir 1859395 Gap 2.3 bits

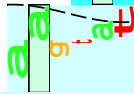


p10 2.6 bits



p10 6.4 bits

|-----| sd-ir 1859395 ydjL\_yeaC- total 6.6 bits



p10 1.5 bits



} p35-(23)-p10 1859401 Gap 1.4 bits

} p35-p10 1859401 total 5.0 bits

} p35-(26)-p10 1859398 Gap 3.7 bits

} p35-p10 1859398 total 7.7 bits

\*1859350 \* 1859340  
5' g c a c t g g c t c g g t t 3'  
- ala - leu - ala - arg -

...-----| ... NC\_000913.ydjL

